



THE MINI CLUBMAN.



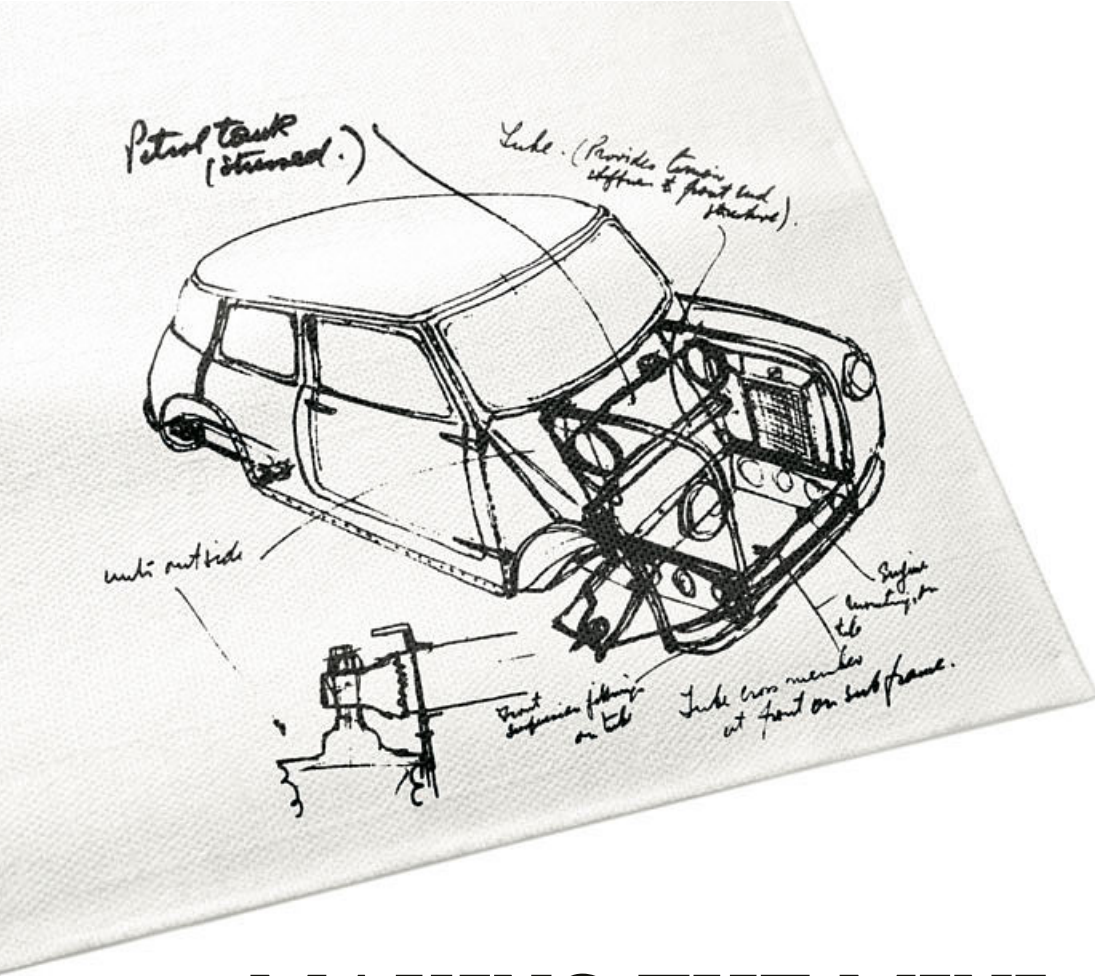
Some say it takes just 7 seconds to fall in love.
We think you only need 6. 1 for each door.
Meet the MINI Clubman.

GO WITH YOUR GUT.

Details of fuel consumption and CO₂ emissions for all models, as required under EU law, can be found in the Technical Data section beginning on page 46.

For more information on the options available for each model, contact your MINI dealer or visit mini.com





MAKING THE MINI: BREAKING THE MOULD.

When Sir Alec Issigonis sketched his initial idea for the Mini on a tablecloth in 1956, his innovative compact design was the perfect response to some of the biggest automotive questions of his era. Almost everything about it was unconventional: he increased the track width as far as he could, mounted the engine transversely, and positioned the instrument cluster centrally for both left and right-hand drive. This ensured maximum space inside the car. The concept was unprecedented – and his revolutionary Mini soon became an icon.

The first Mini to include this design and a handy set of Split Doors appeared in 1960 in the form of the Mini Traveller. 9 years later, the Mini Clubman was born. And with all the charm of a Mini plus a load of extra luggage space, it has won over drivers ever since.

Motorsport legend John Cooper saw star racing potential in the original Mini – so he created a model for the track. Braking, inducing oversteer and then drifting around corners became effortless for rally drivers, thanks to its light weight and short overhangs. Racing around tight bends at high speed, now synonymous with the classic MINI go-kart feeling, laid the foundation for a succession of spectacular wins at the Monte Carlo rally. Here, the Mini proved that agile handling beats sheer power, every time. To honour Cooper's vision, the thoroughbreds of the MINI range bear the name John Cooper Works.

The compact design of Alec Issigonis and racing pedigree of John Cooper have defined the Mini from the very beginning and remain hallmarks of every iteration to this day. Their legacy of innovation lives on in the latest MINI – and the cutting-edge technology within.













VERSATILE INTERIOR.

The size of the MINI Clubman makes it the ideal car for short trips and longer journeys alike. This is largely due to its 360-litre luggage capacity and the versatility of the large rear seat bench. The backrest folds forward in a 40:20:40 split: the middle section can be used either as a comfortable armrest (with cupholders) or as extra space to accommodate longer, bulkier items of luggage. With the optional Comfort Access system and Easy Opener function, the split doors open automatically when you move your feet under the boot and back again.



PERSONALIZED EXTERIOR.

There are countless ways to make a MINI Clubman all your own. If you're looking for styles and features that suit you, the MINI Original Accessories range has it covered.



MINI Original Accessories
Roofbox in Black (approx. 320l)
Black Jack side scuttles and exterior mirror caps
19" John Cooper Works Radial Spoke 526 2-tone (Jet Black, burnished)
LED additional headlights in Brilliant Black
Black sunscreens for side windows

mini.com/accessories



THERE'S MORE THAN ONE WAY TO DRIVE A MINI.

There's also more than one MINI to drive away. Whether you go for the One/D, Cooper/D or Cooper S/SD, each one has a different engine and its own feel behind the wheel. But whichever unit you choose, they all have one thing in common: the power and efficiency of MINI Twin Power Turbo technology.

MINI Clubman models are fitted with a track-style sequential 6-speed manual gearbox as standard. All engines are available with a Steptronic automatic gearbox.

What's more, intelligent ALL4 all-wheel drive in the Cooper S/SD model ensures optimum traction on all road surfaces. See page 38 for details.

With optional MINI Driving Modes, you can adapt the performance of your MINI to match your mood and the driving conditions. In the MID and GREEN modes, Dynamic Damping Control softens the suspension to keep the drive enjoyably smooth. If you want to feel like you're tearing up tarmac in a go-kart, select SPORT mode.



ONE.

Choose from a 1.5-l 3-cylinder petrol engine that delivers 102hp/75kW or a 1.5-l 3-cylinder diesel unit with an output of 116hp/85kW. Both feature MINI Twin Power Turbo technology. The go-kart feeling starts here.

COOPER.

A 1.5-l 3-cylinder petrol engine (136hp/100kW) and a 2.0-l 4-cylinder diesel version (150hp/110kW) offer a handy blend of oomph and economy. Let's not forget a few Cooper hallmarks: a safety bar in Brilliant Black, a Chrome tailpipe and an optional contrast colour for the roof and mirror caps.

COOPER S.

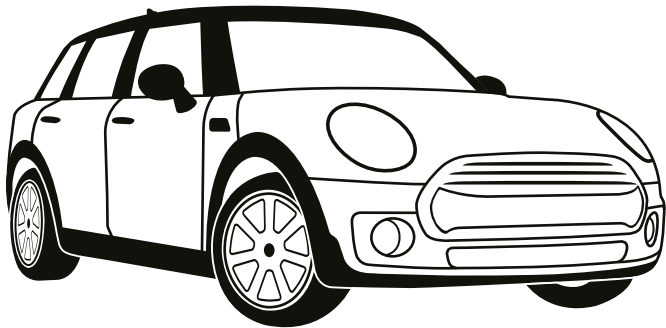
With a 2.0-l 4-cylinder petrol engine (192hp/141kW) or a 2.0-l 4-cylinder diesel unit (190hp/140kW), the Cooper S Clubman packs the biggest punch. The front and rear aprons, bonnet air scoop and dual tailpipes hint at the power waiting to be unleashed on the road. Meanwhile, the red S on the radiator grille, Split Door and side scuttles underlines the car's sporting heritage.

Details of fuel consumption and CO₂ emissions for all models, as required under EU law, can be found in the Technical Data section beginning on page 46.

BUNDLES OF FUN.

If the practically endless list of individual equipment options puts your head in a spin, keep things simple. Spruce up your MINI Clubman with one (or more) of our equipment packages. A lot of thought went into each package: the options included were carefully chosen to complement each other, making your decision that much easier.

Naturally, you can combine them all with other bundles, like the MINI Connected package or the John Cooper Works package.



- | | | | | |
|---|---|---|---|-------------------------|
| ● | ○ | ○ | ○ | SALT. |
| ● | ● | ○ | ○ | PEPPER. |
| ● | ● | ● | ○ | CHILI. |
| ● | ● | ● | ● | JOHN COOPER WORKS TRIM. |

The Salt, Pepper, Chili and John Cooper Works Trim lines differ in scope, each one building on the contents of the one before it. They are made up of smaller packages combined with complementary individual options. The fold-out page on the right provides a detailed overview of what you get with each package. Please go online or visit your local MINI dealer to check availability.

mini.com





SALT.

The Salt equipment package adds a dash of extra comfort and connectivity to the mix. It includes velour floor mats, the lights and storage packages, height-adjustable front passenger seat, automatic air conditioning and fog lights.

PEPPER.

The Pepper package has everything in the Salt bundle and more. Extras include the MINI Excitement package, which consists of Ambient Lighting and toggle switch in the headliner, waterfall interior lighting, welcome lighting in the front and rear footwells, lighting for the exterior door handles and MINI LED door projectors. Also included are the following:

- + Keyless Comfort Access system (with Easy Opener movement sensor under the rear apron)
- + Sports leather steering wheel (for One/D and Cooper/D)
- + Front armrest
- + Exterior mirror caps in body colour (for One/D)
- + 17" Net Spoke wheels (for One/D and Cooper/D)

CHILI.

The Chili package adds a dash of racetrack flair and cutting-edge technology to the mix. It includes all the extras in the Salt and Pepper packages plus:

- + Sports leather steering wheel (for One/D and Cooper/D)
- + Cord cloth/leather in Carbon Black
- + Sport seats (for One/D and Cooper/D)
- + MINI Driving Modes
- + LED technology for headlights and fog lights
- + 17" Vent Spoke wheels (for One/D and Cooper/D)
- + 18" Star Spoke wheels (for Cooper S/S ALL4 and Cooper SD/SD ALL4)

JOHN COOPER WORKS TRIM.

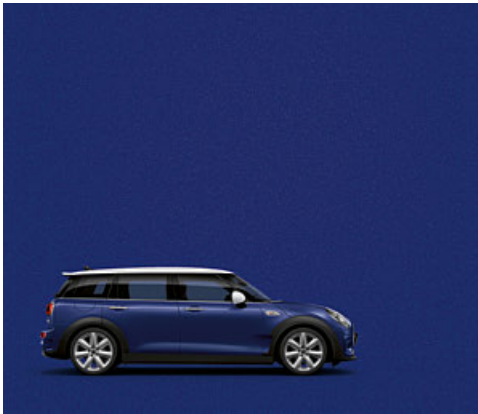
This package combines Salt, Pepper and Chili with exclusive exterior and interior elements from the John Cooper Works range – for the ultimate racing look:

- + John Cooper Works leather sports steering wheel
- + John Cooper Works Dinamica/cloth sports seats, Carbon Black
- + Performance Control (for One/D and Cooper/D)
- + Sports rear roof-spoiler
- + John Cooper Works aerodynamic kit
- + Headliner in Anthracite
- + Stainless-steel pedals and footrests
- + John Cooper Works door sill finishers and gear lever knob
- + Sports suspension available on request (no charge)
- + Park Distance Control, rear
- + 18" John Cooper Works Grip Spoke wheels

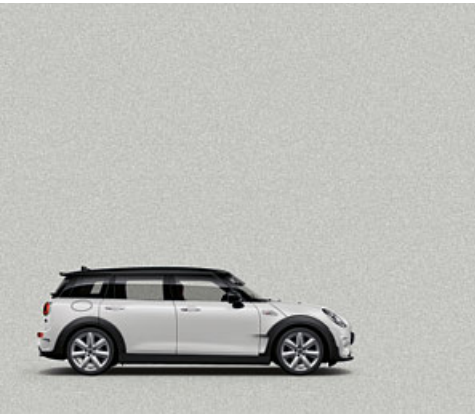
WHICH ONE'S YOURS?



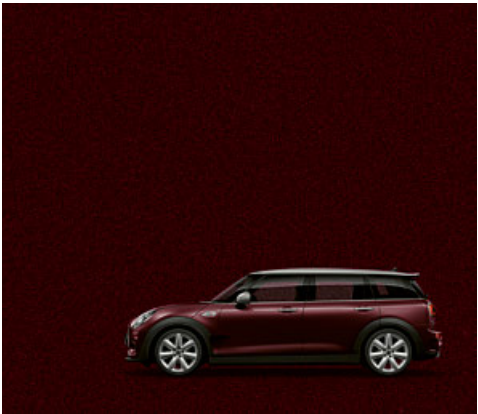
Moonwalk Grey (standard colour)



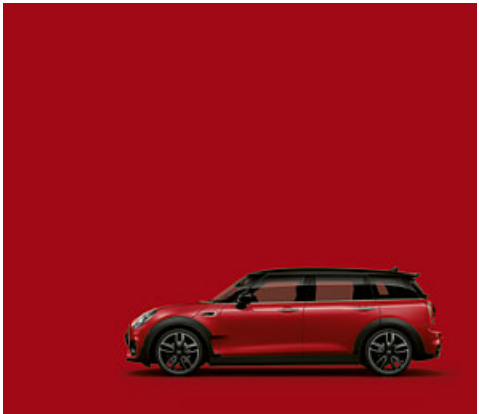
Starlight Blue



White Silver



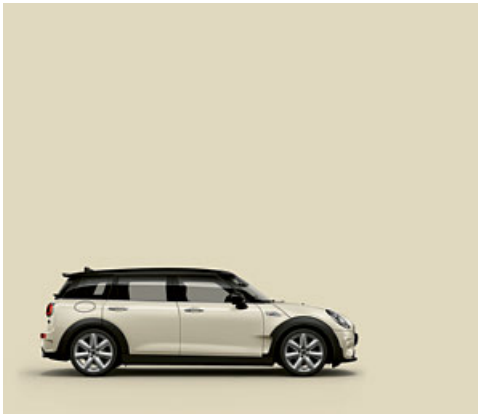
Pure Burgundy



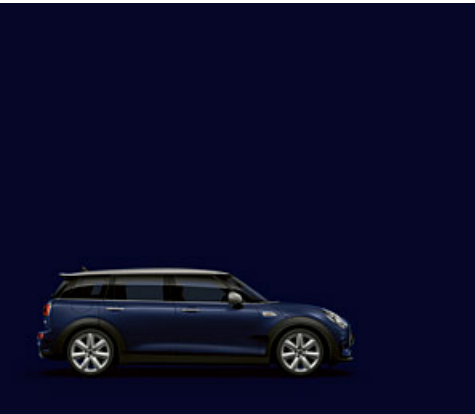
Chili Red



Melting Silver

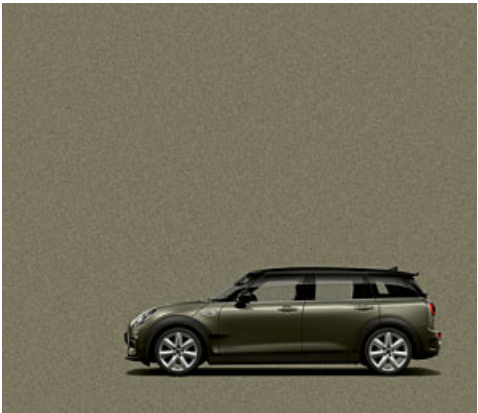


Pepper White



Special colour
MINI Yours Lapisluxury Blue

* Only available for Cooper S models.



Emerald Grey

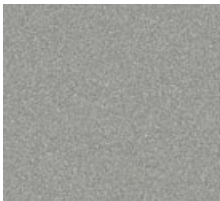


Thunder Grey*



Midnight Black

Roof and exterior mirror caps.



Melting Silver



Aspen White



Jet Black

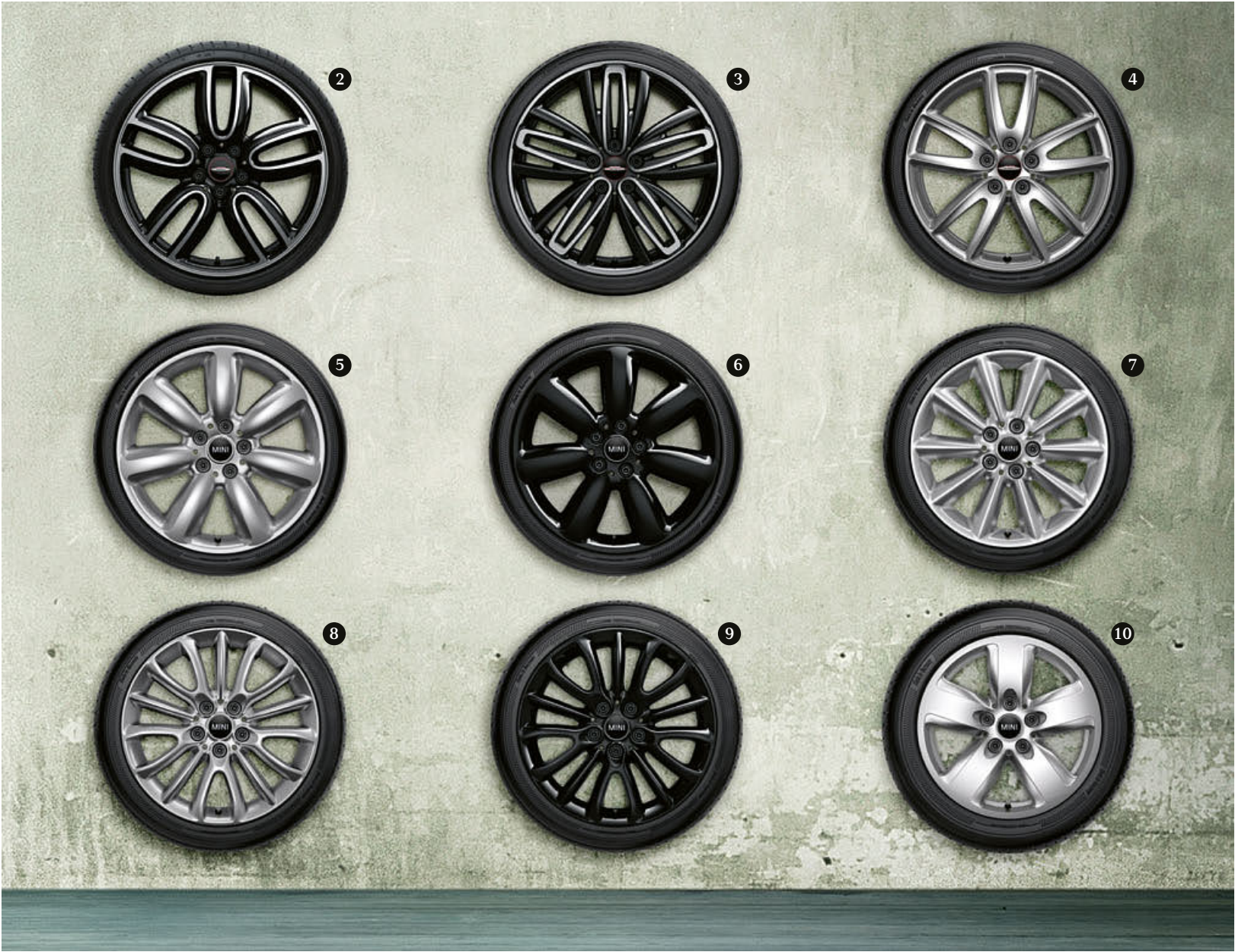


Body colour



BESPOKE DESIGN FOR EVERY OCCASION.

* Available from mini.com/accessories



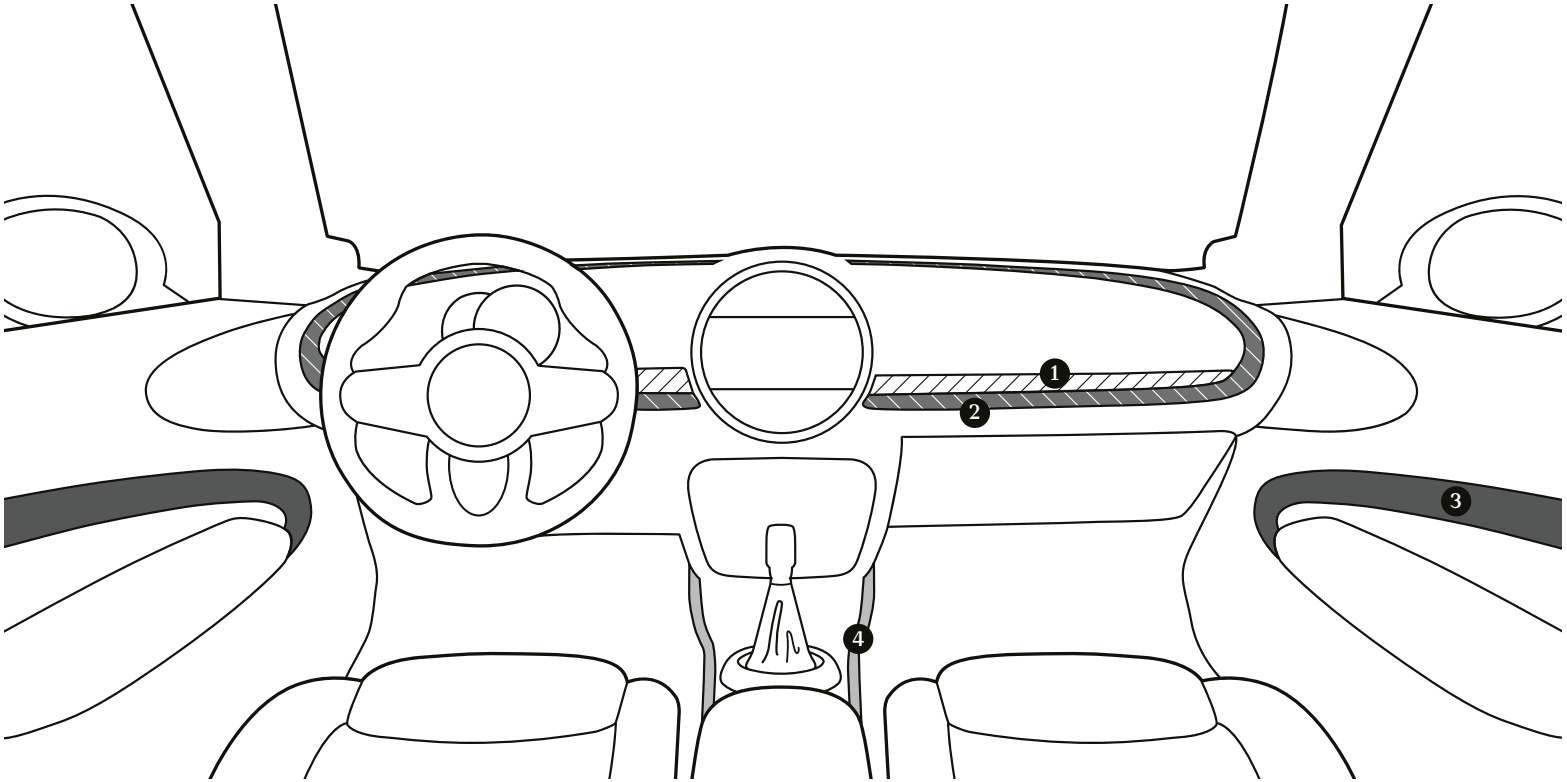
- ❶ 18" MINI Yours Masterpiece, burnished
- ❷ 19" John Cooper Works Course Spoke, burnished*
- ❸ 19" John Cooper Works Radial Spoke 526 2-tone (Jet Black, burnished)*
- ❹ 18" John Cooper Works Grip Spoke 520*
- ❺ 18" Star Spoke
- ❻ 18" Black Star Spoke
- ❼ 17" Vent Spoke
- ❽ 17" Net Spoke
- ❾ 17" Black Net Spoke
- ❿ 16" Revolite Spoke

FALL IN LOVE. OVER AND OVER AGAIN.

Add a personal touch to the interior of the MINI Clubman and choose from 4 high-quality interior style options – 3 of which are part of the exclusive MINI Yours illuminated collection. Each style comprises multiple elements that complement each

other perfectly. The illustration below shows the Satellite Grey interior colour, MINI Yours Piano Black illuminated interior style and Lounge leather seats in Satellite Grey.





INTERIOR ELEMENTS IN DETAIL.

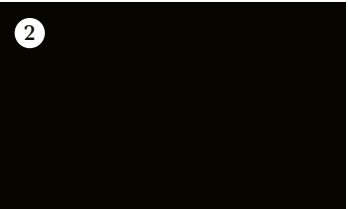
To help you put together the interior that suits you best, we've come up with a few combinations of complementary styles and finishes for 4 key design elements: decorative cockpit trim (1), wraparound cockpit trim (2), decorative door trim (3) and centre console trim (4). For a detailed look at the patterns and colour schemes, take a look at the opposite page.

mini.com

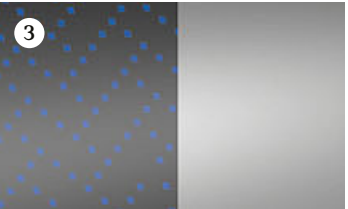
MINI Yours Interior Style Fibre Alloy illuminated.
(Goes well with: Cross Punch leather sport seat in Pure Burgundy)



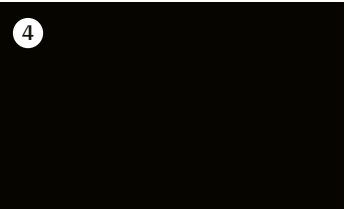
Fibre Alloy



Piano Black

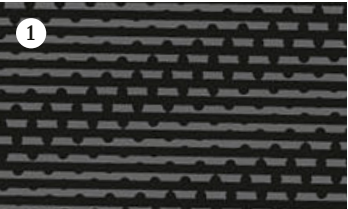


Dark Silver illuminated, Dark Silver



Piano Black

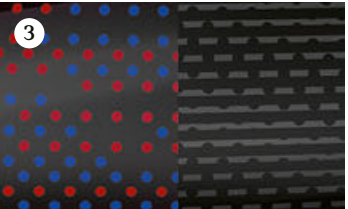
MINI Yours Pure Burgundy illuminated interior style.
(Goes well with: Chester leather sport seats in Indigo Blue, page 10)



Black Chequered



Pure Burgundy

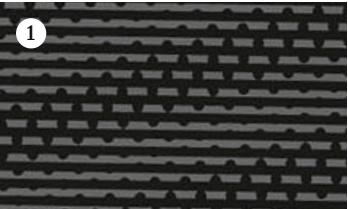


Piano Black illuminated, Piano Black

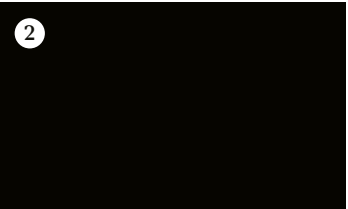


Pure Burgundy

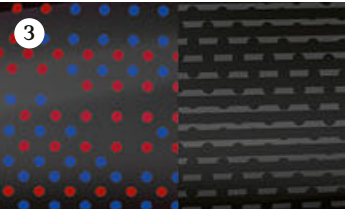
MINI Yours Piano Black illuminated interior style.
(Goes well with: Lounge leather sport seats in Satellite Grey and Satellite Grey interior colour, page 22)



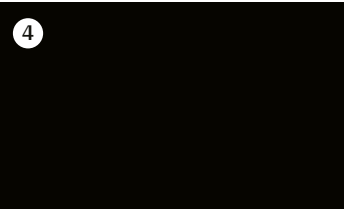
Black Chequered



Piano Black

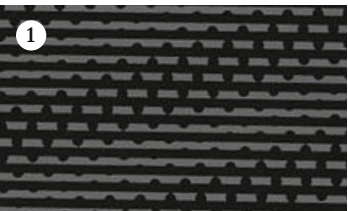


Piano Black illuminated, Piano Black

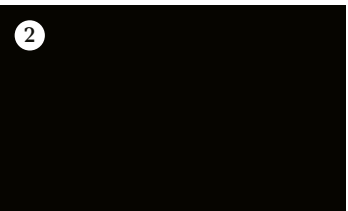


Piano Black

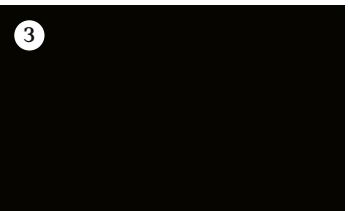
Interior Style Piano Black.
(Goes well with: Cord cloth/leather sport seat in Carbon Black)



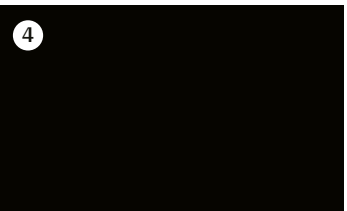
Black Chequered



Piano Black



Piano Black



Piano Black



770 COLOURS IN 1 NIGHT.

What good is a stylish interior if you can't see it in all its glory? Chances are you'll be spending a lot of time here, so brighten up the inside of your MINI Clubman with the set-up it deserves: Ambient Lighting. Part of the optional MINI Excitement package, it can cycle through up to 770 different shades of the colour spectrum, or you can choose from 12 preset colours. So whatever your mood, you're guaranteed to find one to your liking. Each decorative surface is made with the finest materials. In addition, the front door trims included in the MINI Yours interior styles emit an eye-catching fluorescent glow to go with the Ambient Lighting.

Left: MINI Yours Interior Style Pure Burgundy illuminated with Chester leather sport seat in Indigo Blue. Below: MINI Yours Interior Style Piano Black illuminated with Lounge leather MINI Yours sport seat in Carbon Black.



AT HOME IN SECONDS.



Sport seat
Chester leather Indigo Blue



Sport seat
Cross Punch leather Pure Burgundy

SPOILT FOR CHOICE.



Sport seat
Lounge leather
Satellite Grey



Sport seat
Cord cloth/leather
Carbon Black



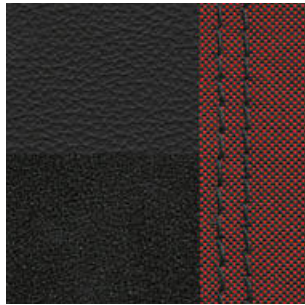
Sport seat
Black Pearl cloth/leatherette
Carbon Black



Sport seat
Double Stripe cloth
Carbon Black



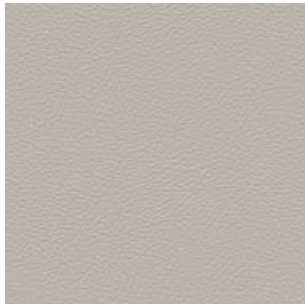
MINI Yours Lounge leather*
Carbon Black



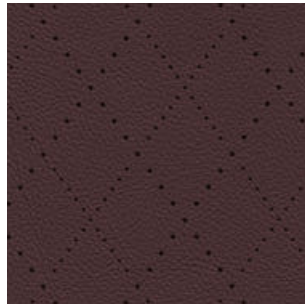
John Cooper Works
Dinamica/leather
Carbon Black



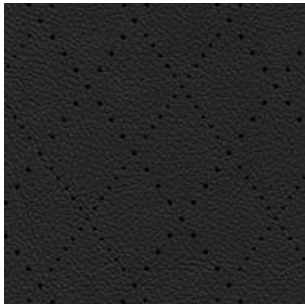
Chester leather*
Indigo Blue



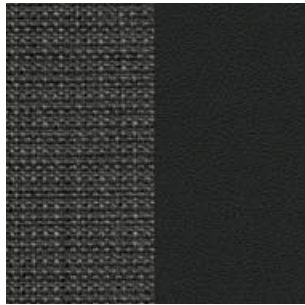
Lounge leather*
Satellite Grey



Cross Punch leather*
Pure Burgundy



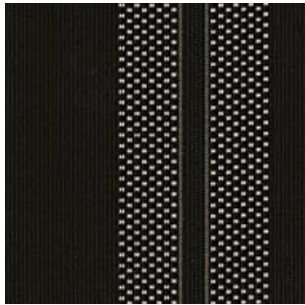
Cross Punch leather*
Carbon Black



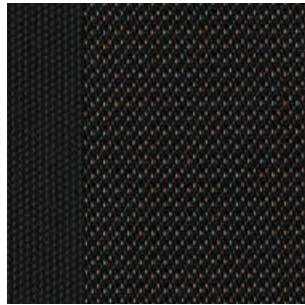
Black Pearl cloth/leatherette
Carbon Black



Cord cloth/leather
Carbon Black



Double Stripe cloth
Carbon Black



Firework cloth
Carbon Black



The optional electric front seat adjustment features a memory function that remembers your favourite seating position, including armrest, recline and lumbar support.

MINI YOURS.

The Carbon Black MINI Yours seat in luxurious Lounge leather isn't just made – it's crafted. The smooth feel of the leather against your hand, the detailed stitching of the Union Jack in the headrest, the braided edging ... the beauty is in the detail.

[mini.com](https://www.mini.com)



* Leather upholstery includes seats (base and backrest), and front and rear headrests.



BIG ON SMALL DETAILS: MINI YOURS.

The MINI Yours customization programme provides a wealth of options for those who prize individuality and refined style. The range represents the best of British craftsmanship, and each item has its own story to tell.

Here are a few examples: the MINI Yours sports leather steering wheel including soft nappa leather and contrast stitching, 18" MINI Yours Masterpiece light-alloy wheels, illuminated MINI Yours interior styles and the spectacular exterior colour MINI Yours Lapisluxury Blue – a deep shade of ultramarine.

You'll find the MINI Yours logo (with Union Jack and needle) on all MINI Yours leather fittings – like the Carbon Black MINI Yours seat, which comes with the finest soft nappa leather, braided piping and a Union Jack stitched into the back of the headrest.



MINI CONNECTED: WELCOME THE WORLD.

MINI Connected is the perfect link between your MINI and your digital life. MINI Connected seamlessly integrates your smartphone, various smartphone apps and the MINI Connected app with your MINI – which is equipped with its own SIM card. So you have new ways of interacting with the car, including for example smart voice control, remote services or your personal concierge. All this, plus smart navigation that learns frequently visited destinations, takes real-time traffic information into consideration and gets you from A to B even more effectively.

The MINI Connected app is a mobile extension of your car that keeps you in touch with your MINI and what’s happening around you. Use the app whenever and wherever you want to call up information about your MINI – and because its linked to the scheduler on your smartphone your MINI will notify you in good time when you have appointments coming up. All MINI Connected functions are being refined all the time, so every trip will be more exciting, more relaxed and more enjoyable than ever before.

mini.com/connected

Access all the benefits of MINI Connected with the Connected Navigation Plus option. It comes with the MINI navigation system with 22.4 cm/8.8” touchscreen plus alternative operation via the MINI Touch Controller on the centre console, and wireless charging. So you have in-car wireless charging and your phone connects to the car’s external antenna. Along with many other online functions for networked navigation, the package includes online speech processing, MINI Connected XL and the Apple CarPlay ready kit.

MAKE YOUR WAY WITH EASE.



SELECTED INTERACTIVE FUNCTIONS.



REMOTE SERVICES AND VEHICLE STATUS.
Use your smartphone to unlock or lock your MINI, sound the horn and flash the high beams. The status display shows you where your MINI is, calculates the available range and, when you enter a destination, works out how long it will currently take you to drive there.



CONNECTED DRIVE SERVICES AND MINI ONLINE FUNCTIONS.
Use the MINI Connected Service apps to check fuel prices at filling stations, pick up messages and receive weather forecasts for your route and destination.



RTTI

REAL TIME TRAFFIC INFORMATION.
RTTI reports the momentary traffic situation and sends the data to the satnav. The system estimates the delay and suggests alternative routes.



ONLINE SEARCH.
Going shopping or eating out? Once you've found somewhere suitable using Online Search, you can send the address to the navigation system, and the phone number to your smartphone, so you can book a table.



MINI FIND MATE.
Keep important items safe with a MINI Find Mate tag. As soon as your smartphone is too far away, the MINI Connected app issues a warning and shows you the last known location of the tagged item.



APPLE CARPLAY READY KIT.
The Apple CarPlay ready kit makes it easy for you to interconnect your iPhone with the display, the controls and the speakers of your MINI. Then you have many apps that you use on your iPhone available on your trip.



FREQUENTLY VISITED PLACES AND SUGGESTED DEPARTURE TIMES.
MINI Connected lists visited, learned or saved destinations and checks the current driving time online. When it's time to leave for a planned destination, MINI Connected notifies you on your smartphone or Apple Watch.



SEND DESTINATION FROM SMARTPHONE TO NAVIGATION SYSTEM.
As long as your smartphone is paired to your vehicle, destinations (learned, saved or imported from your calendar) are automatically saved to the navigation system. Route guidance starts automatically (depending on equipment fitted).



MINI CONCIERGE SERVICE.
You can access the MINI Concierge Service around the clock through your MINI Connected menu. The service will find the answers to your questions, look up addresses and transmit them to the car's satnav, even book hotel accommodation for you.



SPOTIFY.
A huge number of pre-configured apps for MINI Connected allow you to listen to your favourite music while you're on the move. Use Spotify to discover the latest releases, for example, and manage your personal playlists.



CALENDAR INTEGRATION.
MINI Connected can import all destinations from your smartphone calendar. Without any action on your part, it reminds you when it is time to get going and puts your destinations directly into the navigation system.



WIRELESS CHARGING.
Wireless charging automatically tops up the battery as soon as you lay your mobile phone in the charging station in the centre armrest. In this position it is connected directly to the car's external antenna for better voice quality. Most devices support both functions; check with your authorised MINI dealer for compatibility details.



YOUR MEANS OF COMMUNICATION.



1 STANDARD RADIO.

The standard radio has a 16.4cm/6.5" screen, Bluetooth hands-free and audio streaming plus USB audio interface.



2 CONNECTED MEDIA.

Better connected to all services for networked visual radio: the MINI Visual Boost radio with 16.4 cm/6.5" screen, operation by touchscreen or MINI Controller, MINI Connected interface for operation by smartphone with the MINI Connected app.



3 CONNECTED NAVIGATION.

Appropriately networked to all data for better navigation: the high-end navigation functionality with 16.4 cm/6.5" screen with real time traffic information, automatic online map updates, extended MINI Connected services and Apple CarPlay.



4 CONNECTED NAVIGATION PLUS.

Even more scope for maximum possibilities: the 22.4 cm/8.8" screen with splitscreen function, MINI Connected XL, wireless charging for mobile phone, second USB port and ergonomic MINI Touch Controller.

THE MINI FIND MATE.

Forget forgetting: Connected Navigation Plus includes a MINI Find Mate, a small Bluetooth tag for you to attach to important items. As soon as you go a certain distance away from the tagged item, the MINI Connected app sends a signal to your smartphone and if you want it will show you the way back to the item's last known GPS location. The MINI Connected app can administrate up to 6 MINI Find Mates. Get the Find Mates from MINI Lifestyle.



THE BEST JOURNEYS BEGIN WITH PEACE OF MIND.

- ❶ Never lose sight of the important things: The MINI Head-Up Display projects key driving information into the driver's line of sight without obstructing his view of the road. Depending on the optional equipment fitted, this data can include speed limits, navigation, or entertainment functions.
- ❷ Thanks to the Apple CarPlay app, your compatible iPhone can be seamlessly integrated into the MINI Centre Instrument.

The Driving Assistant helps to avoid collisions at speeds of between 10 and 60 km/h. The warning function signals to the driver if the car is getting too close to pedestrians or other vehicles and in an emergency situation, it applies the brakes autonomously. High-Beam Assist, a feature of Driving Assistant, can detect oncoming vehicles and automatically switches to dipped beam and back to high beam at speeds of 50 km/h and above.

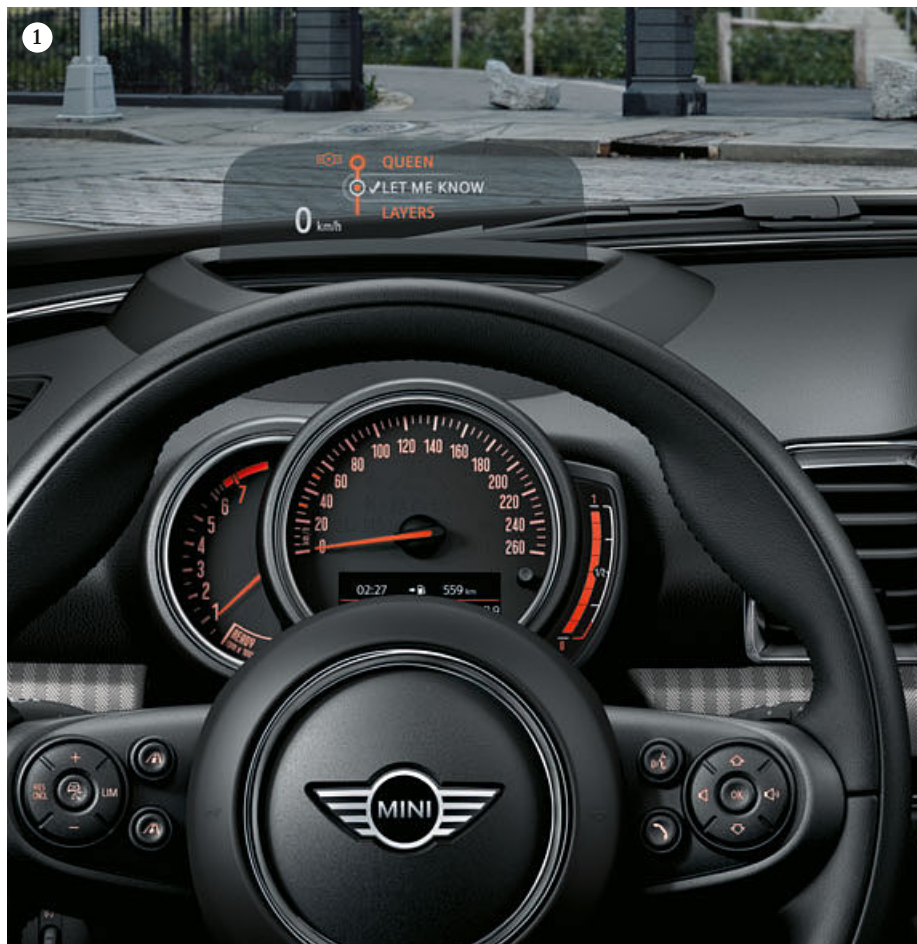
In the event of an accident, the MINI Intelligent Emergency Call system (not shown) transmits the position of the vehicle, direction of travel and severity of the accident to the emergency services, so help can reach you as quickly as possible.

- ❸ A high-resolution reversing camera displays a clear view of the area the behind the car in the MINI Centre Instrument.

The Park Assist (not shown) helps you find a suitable parking space

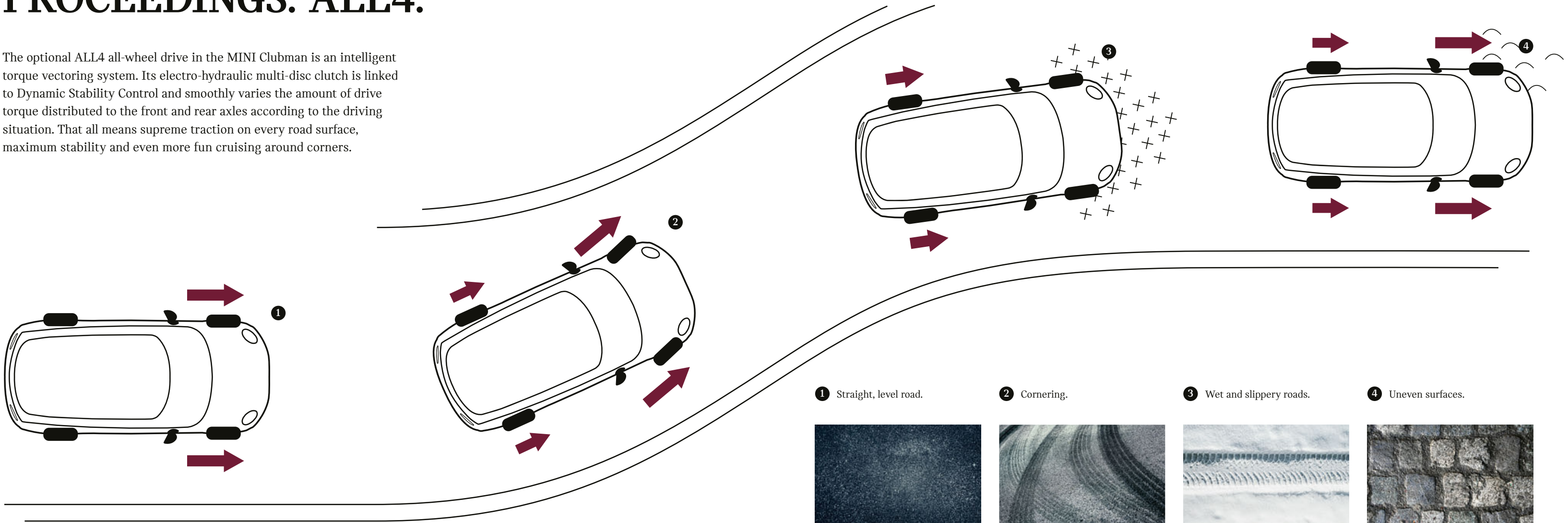
and makes parallel parking easy. All you have to do is brake and accelerate as required.

- ❹ If desired, the split doors of the MINI Clubman can open electronically. All you need is the Comfort Access system: the Easy Opener function means you can open the boot just by waving your foot under the rear of the vehicle.
- ❺ After locking, the LED fin antenna flashes to confirm that the alarm system is active.



FOR A FIRM GRIP ON PROCEEDINGS: ALL4.

The optional ALL4 all-wheel drive in the MINI Clubman is an intelligent torque vectoring system. Its electro-hydraulic multi-disc clutch is linked to Dynamic Stability Control and smoothly varies the amount of drive torque distributed to the front and rear axles according to the driving situation. That all means supreme traction on every road surface, maximum stability and even more fun cruising around corners.



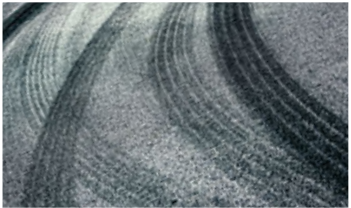
 Torque

1 Straight, level road.



To maintain efficiency in normal driving situations, e.g. on straight, level roads, the system diverts 100 % of the torque to the front axle.

2 Cornering.



ALL4 allocates enough torque to the rear axle to counter the onset of over/understeer and increase stability.

3 Wet and slippery roads.



More torque is directed to the rear axle – in some cases up to 100 % – when a loss of grip occurs at the front. This counteracts understeer and ensures optimal traction.

4 Uneven surfaces.



ALL4 rapidly allocates the optimum amount of power to each axle to ensure maximum traction on uneven roads.





DRIVING THE FUTURE OF MOBILITY.

We have never been so connected – and life has never been so fast-paced. So we need vehicles that can keep up with our lifestyles. And this is why a MINI excels in many different ways. A MINI is all about being yourself, enjoying your journey and turning heads along the way. But it's also about having the right mindset. This means loving what we do. And recognising the value in certain things, whether it's because they mean something, because they're important or because they look good. Since 1959, we have strived to retain what sets MINI apart while creating something new. We want to inspire others to help us develop better ways of going places, which we can appreciate today – and in the future.

Recycling.

At every stage, from design to disassembly, recycling is central to the MINI philosophy. For example, all the materials used in each vehicle's manufacture are selected because they can be used in the most sustainable and environmentally friendly way possible. That way, every MINI can be efficiently and ecologically recycled when its driving days are finally done. We have been working on this approach since 1994 at the BMW Group Recycling and Disassembly Centre in Munich, Germany, the only facility of its kind. Your MINI dealer will be pleased to advise you on the disposal of your old vehicle, or you can visit [mini.com/recycling](https://www.mini.com/recycling)



MINI SERVICE.

For values that we pass on to others. MINI Service.

MINI Service partners share your passion. Entrust your MINI to our MINI Service partners. In electronics, mechanics, body work, paintwork and touch-up repairs, they have the skills to keep it in tip-top order. They use genuine MINI parts, to keep you safe and sound.

Just like in the good new times. MINI warranty extension.

Extend that new-car feeling. When you take out an extended warranty your new MINI is well covered even after the statutory warranty period expires. For up to 5 years. Worldwide! See for yourself – at [mini.com](https://www.mini.com)

Everything taken care of. Passion is what's left. MINI Service Inclusive.

Now you only have to think about it once and never again. Take out MINI Service Inclusive coverage when you buy your new MINI. After that, for up to 6 years all the included servicing and maintenance work is taken care of by a single payment. No-worries driving, guaranteed! See for yourself – at [mini.com](https://www.mini.com)

Your MINI calls in when it needs something. MINI Teleservices.

Always on the move, you can't think of everything, so let your MINI do it for you. With Condition Based Service you automatically get a reminder in the MINI Centre Instrument when the next service appointment is due. With MINI Teleservices the car automatically sends the essential vehicle data for the next condition-based service directly to MINI. Your MINI Service dealership of choice gets the data and contacts you to arrange a date and time for a visit to the workshop – if necessary. The only prerequisite: you must have the "MINI Connected" or "intelligent emergency call" option and a vehicle registered in the MINI Connected app or, as of May 2018, a vehicle registered in the MINI Connected online portal (subject to availability). If you decide you don't need MINI Teleservices you can deactivate the setting whenever you want. More at [mini.com](https://www.mini.com)

We keep your MINI mobile. MINI breakdown and accident assistance.

24 hours a day – 365 days a year: The MINI breakdown and accident assistance service is always there in case you need it. We have an extensive country-specific mobility offering for breakdown assistance. We offer insurance coverage for accident and theft. Specially trained MINI technicians provide solutions by phone or in the field. Round the clock and round the world. Find out more – at [mini.com](https://www.mini.com)



MINI FINANCIAL SERVICES.

The key to the car of your dreams.

MINI Financial Services* represents the quickest way to the car of your dreams. With MINI Leasing, you pay to use the vehicle and not a penny more. MORE MINI packages provide a host of attractive extras, such as suitable insurance**, a tailored service deal or even a combination of both.

If you want to own a MINI but stay flexible with your financing, you'll find a favourable deal with MINI Finance. And for total peace of mind, check out MINI Car Insurance.**

Find out more about MINI Financial Services online at [mini.com](https://www.mini.com) or visit your local MINI dealership.***

* MINI Financial Services is a trade name of BMW Bank GmbH, Heidemannstr. 164, 80939 Munich, Germany.
** Contractual partner and risk carrier is Allianz Versicherungs-AG.
*** Vehicle also includes a service package. See service package agreement for details.

Warranty.

Every MINI is supplied with a 2-year dealer warranty against manufacturing defects. The MINI dealership where the purchase was made is responsible for honouring the warranty. Repair work can be carried out at any authorised MINI dealer, MINI Service Authorised Workshop or any other service centre authorised by MINI. Defects arising in the first 6 months after purchase are deemed by law to have existed at the time of purchase and the dealer has the onus of proving that the vehicle is not defective due to a manufacturing defect. Every MINI also comes with a 12-year anticorrosion warranty, which covers the vehicle against rusting of the body panels. The painted surfaces of the car are covered by a 3-year warranty. This warranty does not cover damage to the vehicle body or under-body caused by stone impacts, scratches or dents, accident damage or other damage caused by environmental factors. Failure to comply with the service schedule provided by the manufacturer may invalidate this warranty.

TECHNICAL DATA FOR THE MINI CLUBMAN.

Engine ^{1,2}		One	One D	Cooper	Cooper D	Cooper S	Cooper S ALL4	Cooper SD	Cooper SD ALL4
Cylinders/configuration/ valves per cylinder		3/in-line/4	3/in-line/4	3/in-line/4	4/in-line/4	4/in-line/4	4/in-line/4	4/in-line/4	4/in-line/4
Displacement	cc	1499	1496	1499	1995	1998	1998	1995	1995
Nominal power/ rated speed	kW/hp/ rpm	75/102/ 3900–6500	85/116/ 4000	100/136/ 4500–6500	110/150/ 4000	141/192/ 5000–6000	141/192/ 5000–6000	140/190/ 4000	140/190/ 4000
Max. torque/revs	Nm/rpm	190/1380–3600	270/1750–2250	220/1580–4100	350/1750–2500	280/1350–4600	280/1350–4600	360/1500–2750	360/1500–2750
Compression ratio/fuel	:1	11/91–98 RON	16.5/diesel	11/91–98 RON	16.5/diesel	11/91–98 RON	11/91–98 RON	16.5/diesel	16.5/diesel

Performance ¹									
Max. speed	km/h	185 [185]	192 [192]	205 [205]	212 [212]	228 [228]	[225]	[225]	[222]
Acceleration 0–100 km/h	s	11.3 [11.6]	10.8 [10.8]	9.2 [9.2]	8.9 [8.6]	7.3 [7.2]	[7.3]	[7.6]	[7.4]
Acceleration 80–120 km/h (5th gear)	s	13.3	11.2	10.4	8.6	7.8	–	–	–

Fuel consumption ^{1,2}									
Urban	l/100 km	7.2 [6.8]	4.7 [4.6]	7.1 [6.9]	4.9 [4.7]	8.4 [6.7]	[7.5]	[5.0]	[5.7]
Extra-urban	l/100 km	4.9 [5.1]	4.0 [3.9]	5 [5]	3.9 [4.1]	5.6 [5.3]	[5.7]	[4.2]	[4.3]
Combined	l/100 km	5.8 [5.7]	4.3 [4.1]	5.8 [5.7]	4.3 [4.3]	6.6 [5.8]	[6.4]	[4.5]	[4.8]
CO ₂ emissions, combined	g/km	131 [130]	112 [109]	131 [130]	112 [113]	151 [133]	[145]	[119]	[127]
Tank capacity	l	48	48	48	48	48	48	48	48

Weight ¹ /Luggage capacity ¹									
Unladen weight EU ³	kg	1395 [1420]	1445 [1460]	1395 [1425]	1470 [1505]	1460 [1470]	[1555]	[1525]	[1585]
Max. permitted weight	kg	1865 [1890]	1915 [1930]	1865 [1890]	1965 [2000]	1920 [1945]	[2040]	[2025]	[2085]
Max. permitted load	kg	530 [530]	530 [530]	530 [530]	530 [530]	530 [530]	[530]	[530]	[530]
Max. permitted axle load, front/ rear	kg	960/955 [985/950]	1000/985 [1020/980]	960/955 [990/950]	1025/985 [1070/980]	1000/965 [1020/960]	[1060/1020]	[1065/1000]	[1080/1040]
Luggage capacity	l	360–1250	360–1250	360–1250	360–1250	360–1250	360–1250	360–1250	360–1250

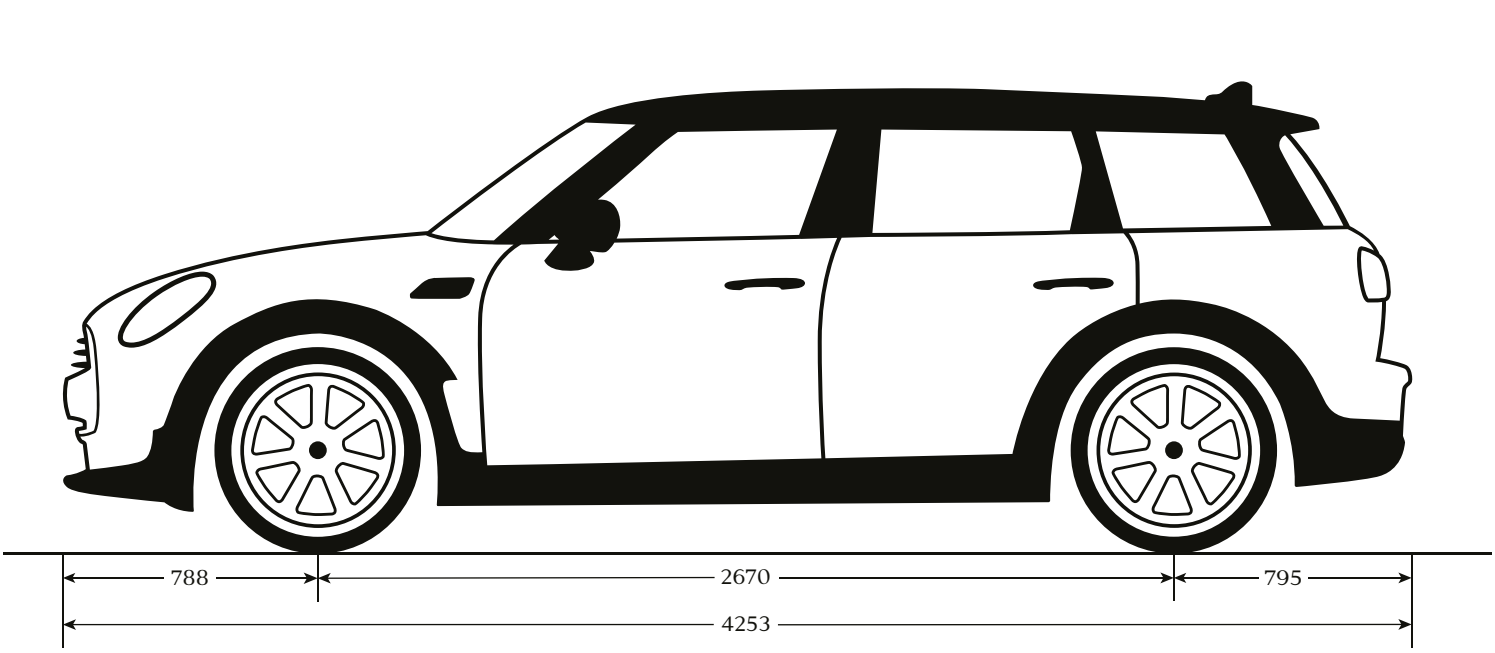
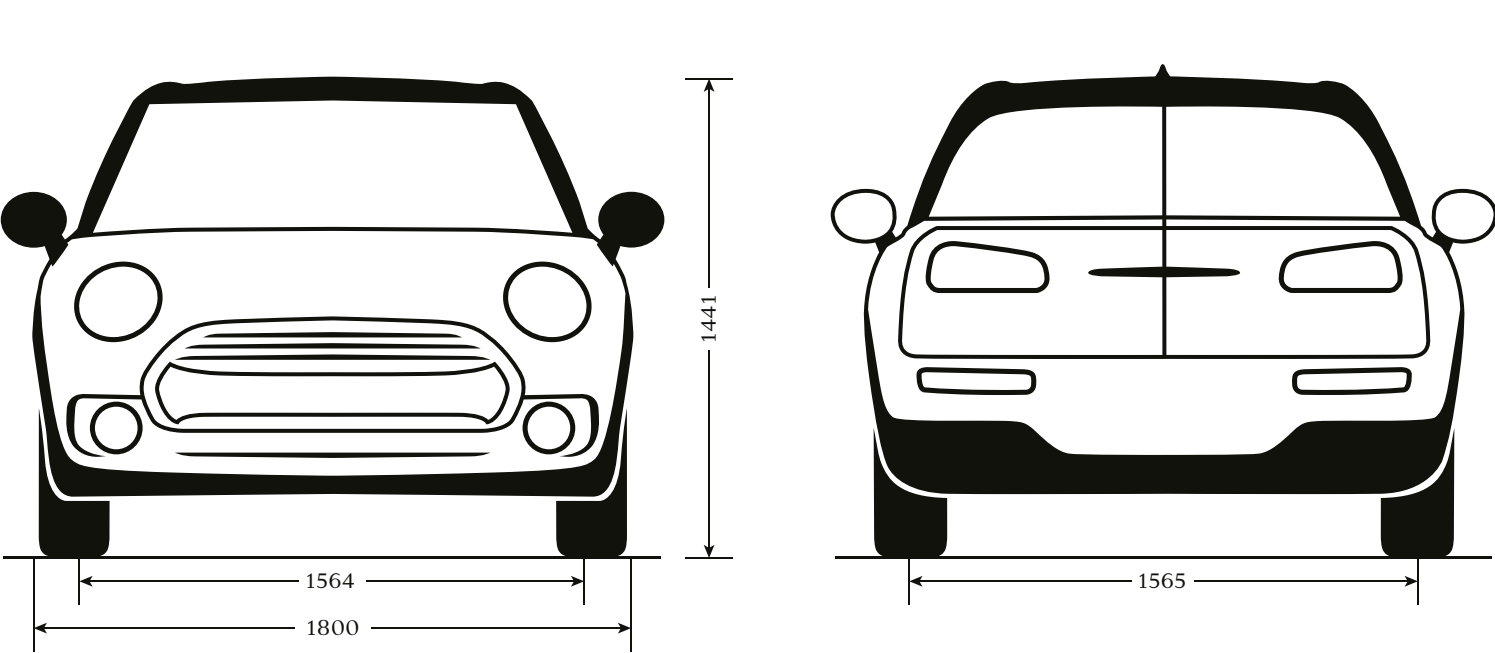
Wheels									
Tyre dimensions, front/rear		205/55 R16 91W	205/55 R16 91W	205/55 R16 91W	205/55 R16 91W	225/45 R17 94W XL	225/45 R17 94W XL	225/45 R17 94W XL	225/45 R17 94W XL
Wheel dimensions, front/rear		7 J x 16	7 J x 16	7 J x 16	7 J x 16	7.5 J x 17	7.5 J x 17	7.5 J x 17	7.5 J x 17
Material		Lightweight alloy	Lightweight alloy	Lightweight alloy	Lightweight alloy	Lightweight alloy	Lightweight alloy	Lightweight alloy	Lightweight alloy

¹ All figures relate to vehicles with the standard 6-speed manual transmission. Values in [] relate to vehicles with 7-speed/8-speed Steptronic transmission.

² The values shown for fuel consumption, CO₂ emissions and energy consumption are calculated in accordance with the measurement method prescribed in the European Regulation (EC) 715/2007 in the version applicable at the time of approval. The figures refer to a vehicle with basic configuration in Germany and the range shown considers optional equipment and the different size of wheels and tyres available on the selected model and may vary during the configuration. The values are already based on the new WLTP test cycle and have been translated back into NEDC-equivalent values for the purpose of comparison. [For these models, different values to those shown here apply when calculating taxes and other vehicle-related duties that (also) focus on the CO₂ emissions.]

³ Assuming car is fuelled to 90 % of tank capacity, and allowing 68 kg for the driver and 7 kg for luggage. The unladen weight quoted is for standard-specification vehicles. Optional equipment will increase this figure.

MINI CLUBMAN DIMENSIONS.



Cooper S track width: 1560 (front), 1561 (rear).
All figures are in millimetres (mm).



WE'VE SAVED THE BEST FOR LAST: THE TEST DRIVE.

What's the point of revving yourself up without taking it for a spin? Get behind the wheel. Make yourself comfortable in the driver's seat. Listen to the satisfying sound the door makes as it closes behind you. Fasten your seat belt. Adjust the rear-view mirror and look over at your MINI dealer. He knows exactly what awaits you: a drive like no other, guaranteed to inspire. It's time to start the engine and get to know the new MINI Clubman.

mini.com



The models, standard and optional equipment and combinability of options in this catalogue relate to cars supplied by BMW AG for the German market. The availability of standard and optional equipment, and configurations of options, may vary for all models in this brochure after going to press (on 20 December 2018), and may vary from country to country within the European Union. For detailed information about the situation in your country, please contact your authorized MINI dealer. Subject to changes in design and equipment.

© BMW AG, Munich, Germany.
Not to be reproduced, wholly or in part, without the written permission of BMW AG, Munich.

For more information, visit
[mini.com](https://www.mini.com)



facebook.com/mini

MINI ORIGINAL ACCESSORIES
mini.com/accessories

MINI COLLECTION
shop.mini.com

March 2019